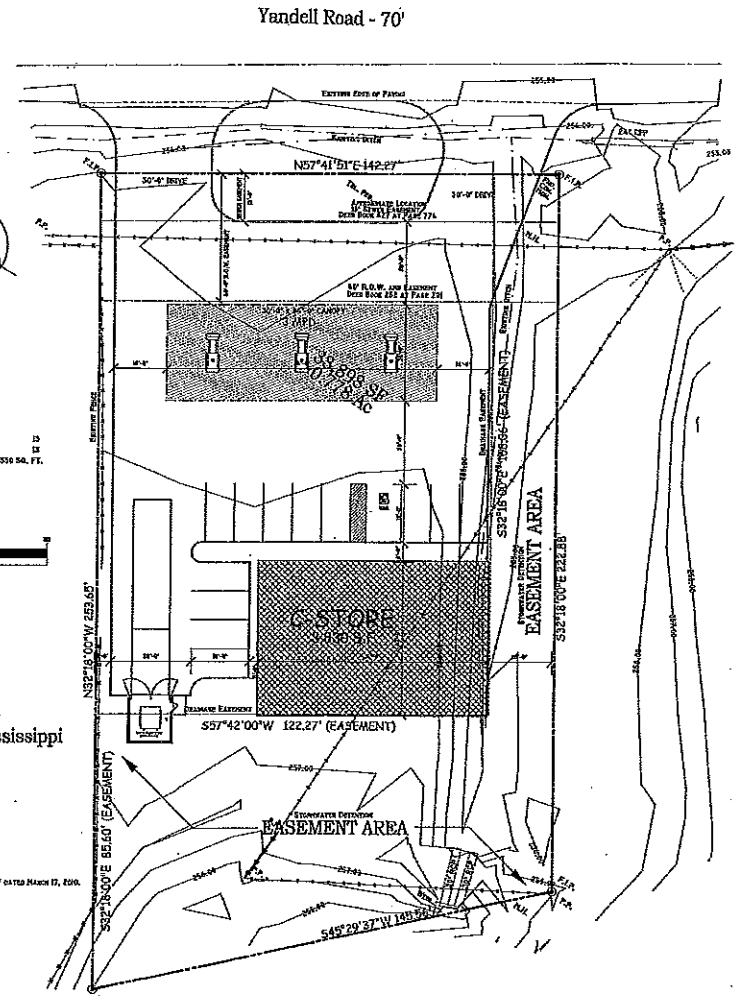


GRADING PLAN
SCALE 1" = 20'-0"



SITE PLAN
SCALE 1" = 20'-0"

PARKING
REMOVED 13
TOTAL BUILDING 3,350 SQ. FT.

GRAPHIC SCALE
(IN FEET)
1 inch = 20 ft.

Topographic Survey
for
Ray Bedi
Part of the SE 1/4 of the NW 1/4 of
n 27, T8N, R2E, Madison County, Mississippi

DEWEY BRIDGES AND ASSOCIATES, INC.
REGISTERED PROFESSIONAL LAND SURVEYOR
MISSISSIPPI
PLAT NO. 11773
SCALE: 1" = 20' DATE: JANUARY 18, 2018

NOTE: THE HIGHEST FINISH ELEVATION IS 206.25' PER FIELD MEASUREMENT DATED MARCH 17, 2018.
THIS BASE FLOOR ELEVATION IS 185.0'.
THE ELEVATION WITH THE ELEVATION IS 25.25'.

FLA.

FOR CONSTRUCTION

SITE PLAN

clingan and associates
architect

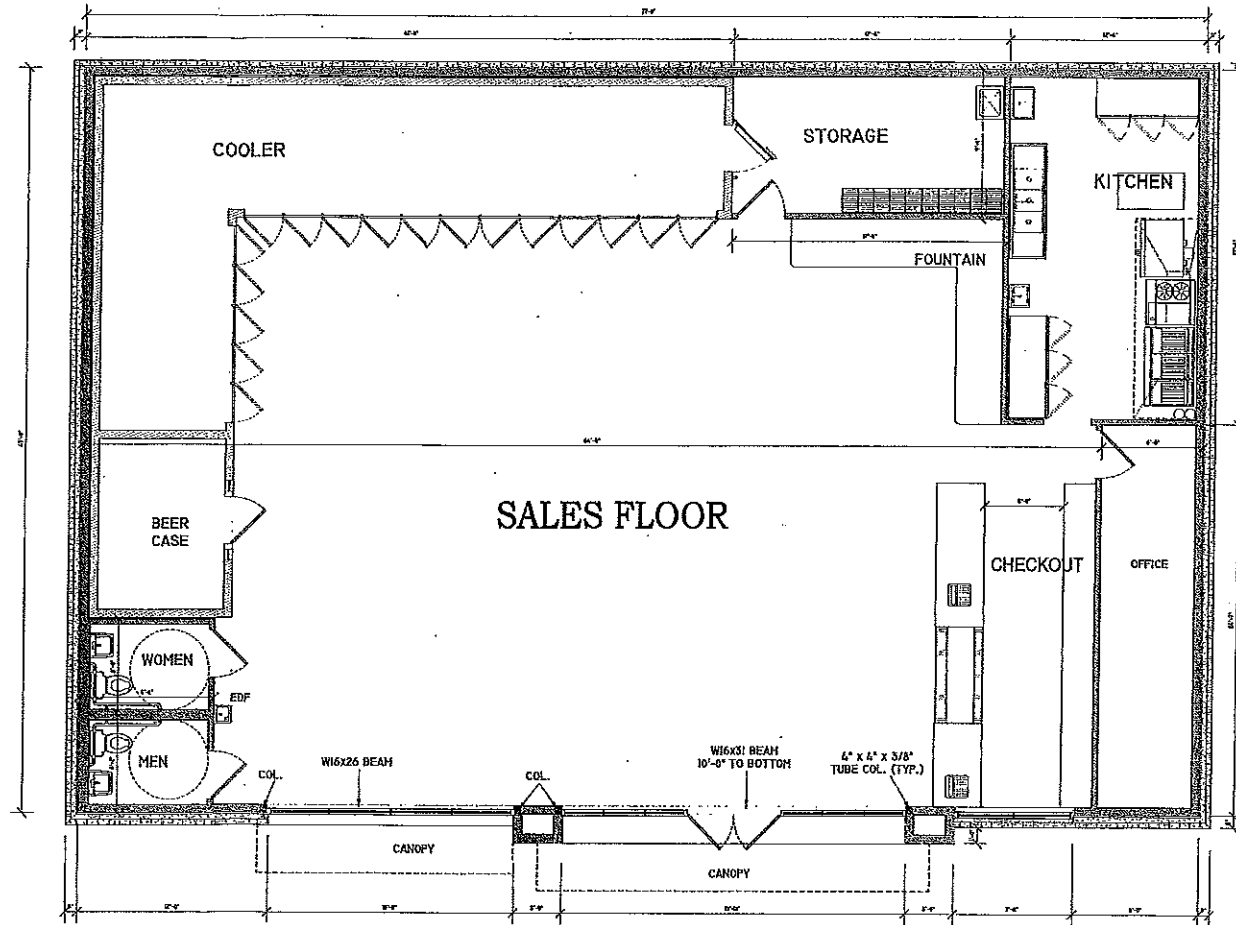
C-STORE
Yandell Road
Cluckstad, Mississippi

5339 I-55 NORTH, STR. 110B
JACKSON, MISS. 39206-4141
PHONE AND FAX 601-712-0993

DATE: 02/29/18
DRAWN: RKC
SCALE: 1" = 20'-0"

Page 1 of 1





FLOOR PLAN

SCALE 1/4" = 1'-0"

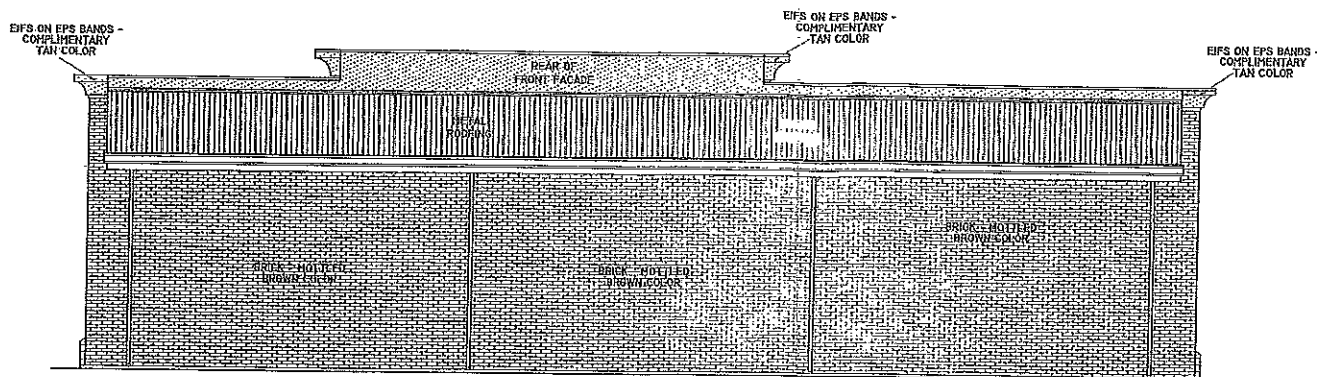


FLOOR PLAN
clingan and associates
 architect
 5339 E-55 NORTH, BTE. 110B
 JACKSON, MISS. 39206-4141
 PHONE AND FAX 601-713-0993
 E-MAIL: clinganassociates@live.com
 ALL MATERIAL HEREIN © 2004 CLINGAN AND ASSOCIATES ARCHITECT

C-STORE
 Vandell Road
 Gluckstadt, Mississippi

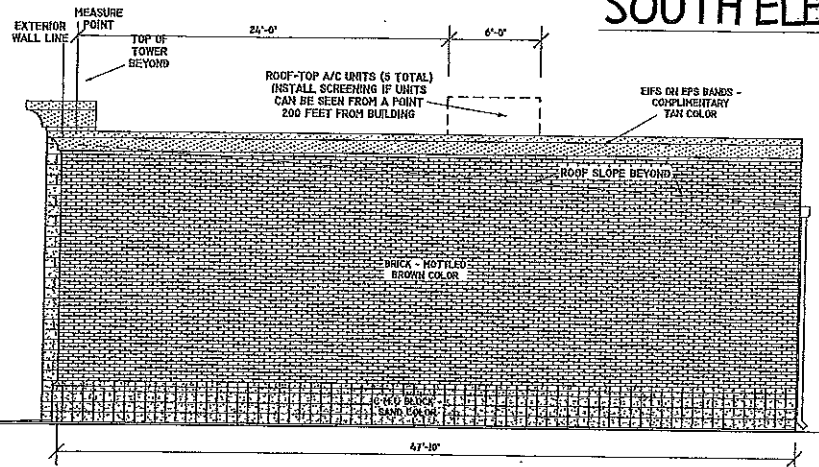
Date: 02/19/05	Rev: 05/17/06 RRC	Page: 2
Drawn: JWC	Rev: 06/19/06 RRC	of: 35
Checked: JWC	Rev:	

THIS PROJECT HAS BEEN REVIEWED BY THE ARCHITECT FOR COMPLIANCE WITH THE NATIONAL BUILDING CODE AND THE NATIONAL ELECTRICAL CODE. THE ARCHITECT'S REVIEW IS LIMITED TO THE SCOPE OF THE CONTRACT AND DOES NOT CONSTITUTE A GUARANTEE OF THE ACCURACY OF THE INFORMATION PROVIDED.



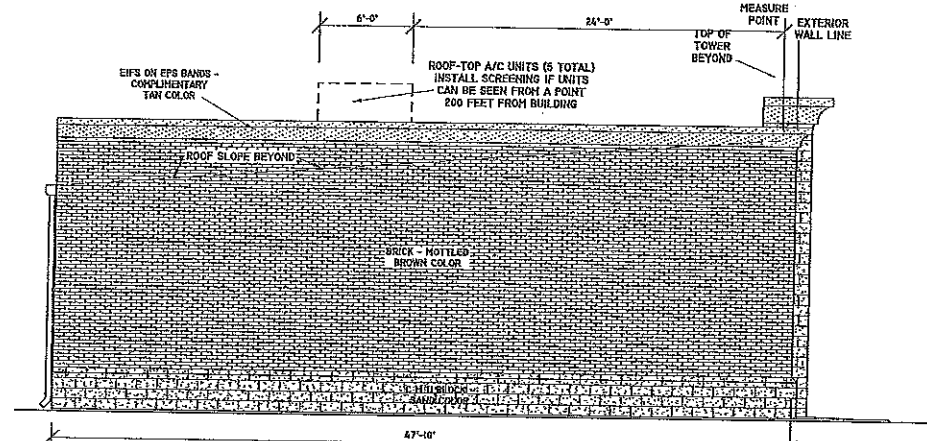
SOUTH ELEVATION

SCALE 1/4" = 1'-0"



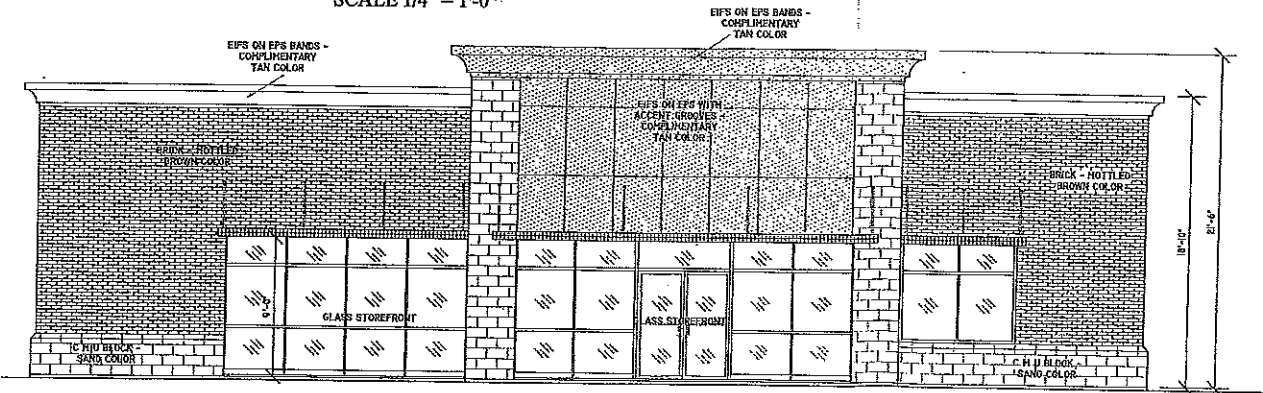
WEST ELEVATION

SCALE 1/4" = 1'-0"



EAST ELEVATION

SCALE 1/4" = 1'-0"



NORTH ELEVATION

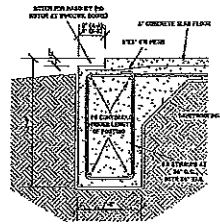
SCALE 1/4" = 1'-0"



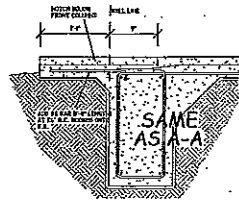
ELEVATIONS
clingan and associates
 architect
 5330 I-55 NORTH, STE. 1100
 JACKSON, MISS. 39206-4141
 PHONE AND FAX 601-713-0993
 EMAIL: cinganassociates@live.com

C-STORE		
Yandell Road Gluckstadt, Mississippi		
Date: 05/11/16	Rev:	Rev:
Draw: RKC	By:	3

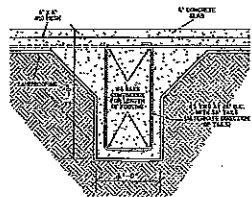
This project was not prepared by the architect and architect's seal is not applicable to this project. It is intended for use as a permit drawing. The State Board of Architectural Examiners is not responsible for the accuracy of this information.



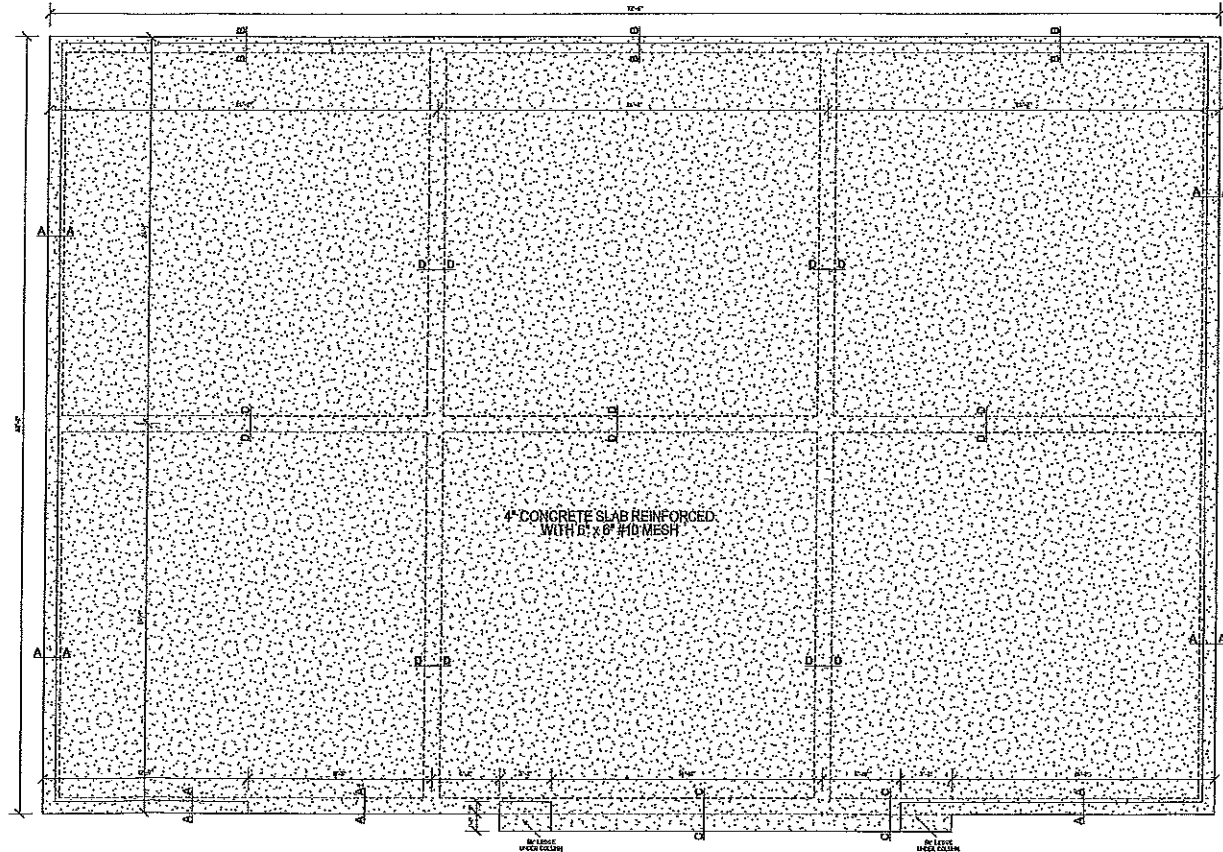
PERIMETER FOOTING (A-A, B-B)
SCALE 1/4" = 1'-0"



PERIMETER FOOTING (C-C)
SCALE 1/4" = 1'-0"



INTERIOR FOOTING (D-D)
SCALE 1/4" = 1'-0"

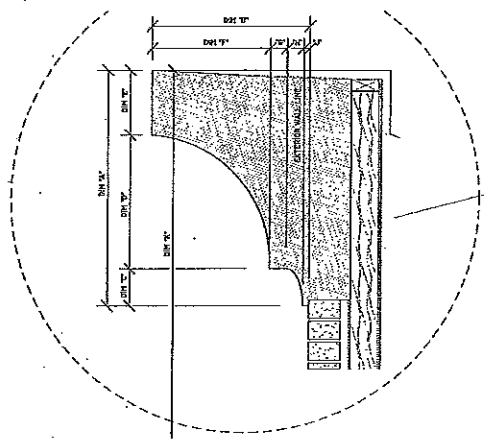


FOUNDATION PLAN
SCALE 1/4" = 1'-0"



FOUNDATION PLAN
clingan and associates
architect
5359 L-55 NORTH, BITE 110B
JACKSON, MISS. 39206-4141
PHONE AND FAX 601-713-0993
E-MAIL: cll@clinganassociates.com

C-STORE
Yandell Road
Gluckstadt, Mississippi
Date: 05/03/16
Drawn: RKC
Checked: []
Scale: 1/4" = 1'-0"

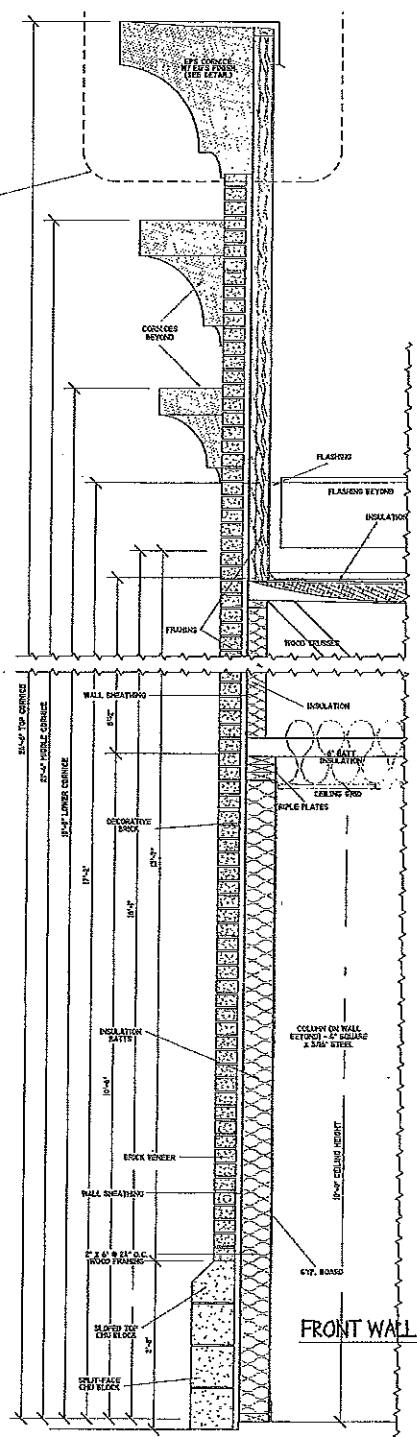


CORNICE DETAIL

SCALE 1/2" = 1'-0"

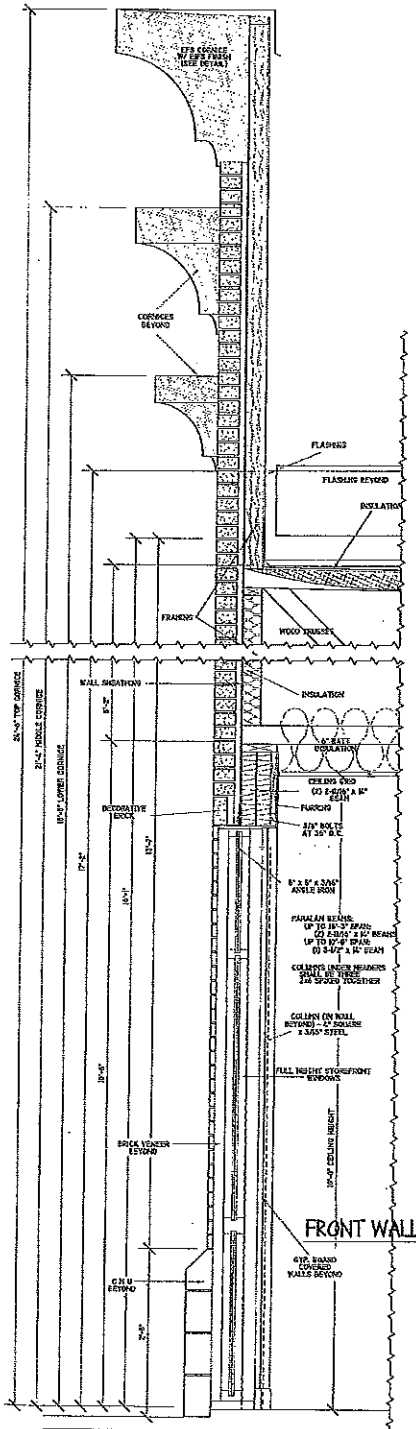
	LOWER CORNICE	MIDDLE CORNICE	TOP CORNICE
A - HEIGHT	3'-0"	4'-0"	5'-0"
B - DEPTH	2'-0"	2'-4"	3'-4"
C	5'-3 1/2"	7'-0"	9'-0"
D	1'-8 1/2"	2'-0"	2'-0"
E	1'-0"	1'-0"	1'-0"
F	1'-0"	2'-0"	3'-0"
G	2'-0"	3'-0"	4'-0"
H	2'-0"	3'-0"	4'-0"
I	3'-0"	4'-0"	5'-0"
J - HEIGHT A.F.F.	2'-4"	2'-0"	1'-6"

NOTE: DIM. "A" IS MEASURED FROM OUTER EDGE OF FINISHED EXTERIOR WALL CORNER ON LEFT



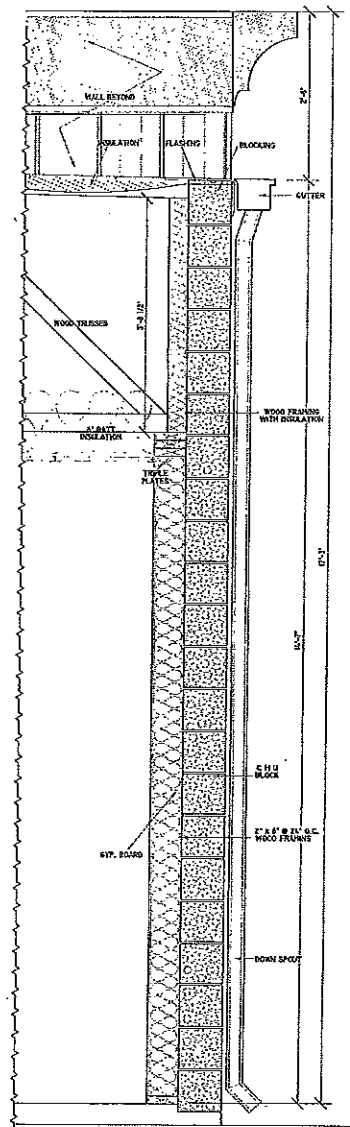
FRONT WALL DETAIL 1

SCALE 1/4" = 1'-0"



FRONT WALL DETAIL 2

SCALE 1/4" = 1'-0"

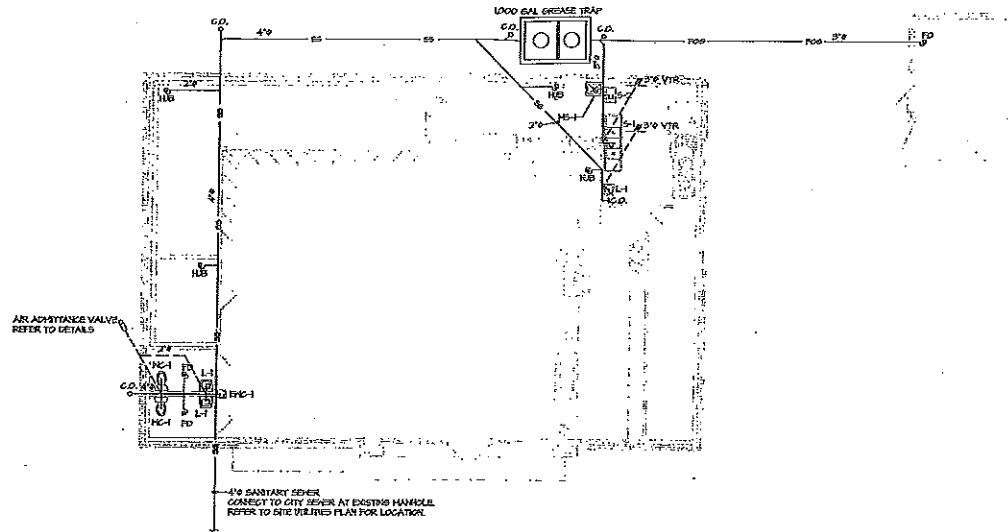


REAR WALL DETAIL

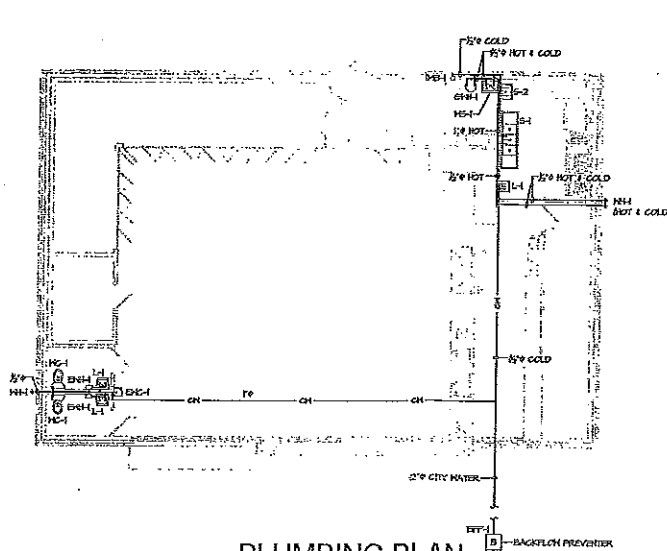
SCALE 1/4" = 1'-0"



SECTIONS		C-STORE
<i>clingan and associates</i>		
5339 I-55 NORTH, STE. 110B JACKSON, MISS. 39206-4141		Vandell Road Gluckstadt, Mississippi
Drawn: RWC	Scale: 1/4" = 1'-0"	Page: 5



WASTE & VENT PLAN
SCALE 1/8" = 1'-0"

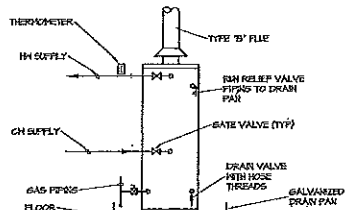
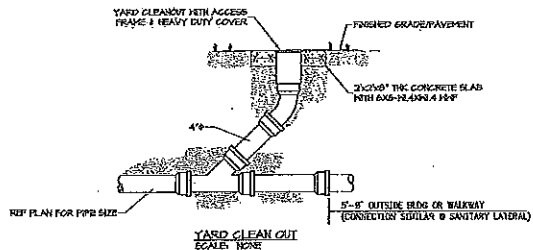


PLUMBING PLAN
SCALE 1/8" = 1'-0"

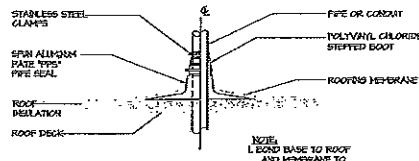
PIPING LEGEND	
— CH —	COLD WATER PIPING
— HW —	HOT WATER PIPING
— SS —	SAN. SEWER PIPING
— FOG —	FAT OIL & GREASE PIPING
— V —	VENT PIPING

Thomas E. Lonafca Licensed Professional Engineer 2443 S. State Drive Jackson, MS 39203	PLUMBING PLANS <i>clingan and associates</i> architect	C-STORE Yandell Road Gluckstadt, Mississippi
	3339 S. NORTH, STE. 1103 JACKSON, MISS. 39206-4141 PHONE AND FAX 601-713-0293	Date: 01/01/10 Drawn: [Signature] Checked: [Signature]

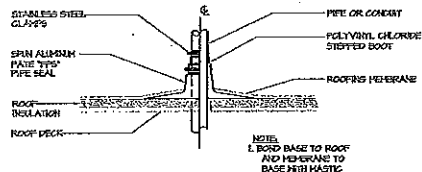




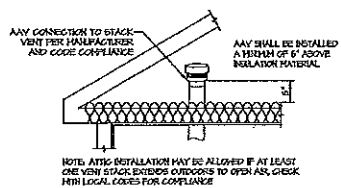
GAS WATER HEATER DETAIL
SCALE: NONE



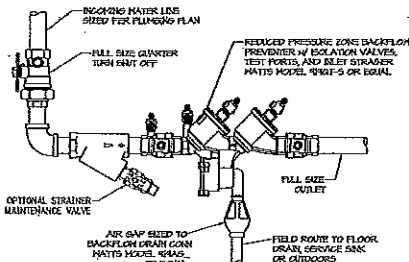
PIPE SEAL DETAIL
SCALE: NONE



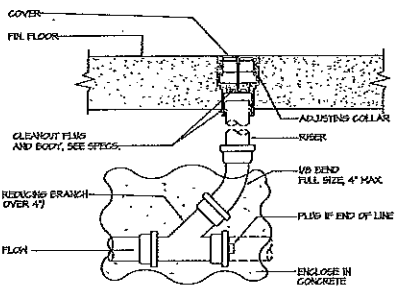
PIPE SEAL DETAIL
SCALE: NONE



AIR ADMITTANCE VALVE - ATTIC INSTALL
SCALE: NONE



INCOMING DOMESTIC WATER SERVICE
SCALE: NONE



FLOOR CLEAN OUT
SCALE: NONE

PLUMBING FIXTURE/EQUIPMENT SCHEDULE				
MARK	DESCRIPTION	QTY SUPPLY	DRAIN	MIN. TRAP
WC-4	HALL MOUNT WATER COOLER, BARRIER-FREE, EQUAL TO ELKAY HW-122, NO YAC, SINGLE PHASE, 4.0 FLA	3'	2"	6"
L-1	LAVATORY, HALL MOUNT, EQUAL TO AMERICAN STANDARD LUGERIE C556 W/ 8550 TO WIDESPREAD FAUCET AND INST CONTROL HANDLES, PROVIDE OVERSET DRAIN AND TRAP HEAD.	3'	2"	6"
WC-1	WATER CLOSET, FLUSH TANK TYPE, ADA COMPLIANT, ELEVATED BOWL, COLOR FER ALUM, EQUAL TO AMERICAN STANDARD 2332L20A, PROVIDE SEAT.	1'	2"	3"
HS-1	HOP BASIN, FLAT HEAD 162424 24" X 24" HOLLOWED STONE W/ DRAIN FAUCET, 2524A HOSE AND BRACKET, 2524C HOP HANGER BRACKET	2'	2"	6"
WH-1	WATER HEATER, 40 GALLON NATURAL GAS, 40,000 BTU/H, EQUAL TO STATE 656-40 TERT L, PROVIDE DRAIN PAN W/ 3/4" OVERFLOW LINE TO FLOOR SINK.	SEE PLAN	N/A	N/A
WH-2	WATER HEATER, POINT OF USE, 27 GAL., ELECTRIC, 1440 WATT, 120V, 12 FLA, EQUAL TO BOSCH ESSE, MOUNT ON HALL UNDER LAVATORY, PROVIDE HALL MOUNT DRAIN PAN EQUAL TO GAMES MODEL 1470, PROVIDE 3/4" OVERFLOW TO FLOOR DRAIN.	SEE PLAN	N/A	N/A
DFP-1	BACKFLOW PREVENTER, REDUCED PRESSURE ZONE, W/ ISOLATION VALVES, TEST PORTS, AND BREATHER, EQUAL TO MATTS MODEL 9845-S OR EQUAL.	SEE PLAN	N/A	N/A
VP-1	ICE HANGER OUTLET BOX, 1/2" WATER-TITE PAN 3120 W/ 1/2" GREAT CONNECTION, QUARTER TURN SHUT OFF VALVE	3'	N/A	N/A
WH-1	HALL HYDRANT, FREEZELESS, KEYED TYPE, WITH AIR SECTION VACUUM BREAKER, EQUAL TO HOODFORD MODEL 65, PROVIDE KEY-ON KEY	3'	N/A	N/A
S-1	SINK, S BOWL, EQUAL TO ADVANCE TACO 263-S-24R, PROVIDE W/ HALL MOUNT SINK FAUCET, EQUAL T18 BRASS B-0220	2'	2"	6"
S-2	SINK, F BOWL, BOWL SIZE: 16" X 20" X 12" DEEP, 304-SS, OPEN FRAME BASE, EQUAL TO ADVANCE TACO 264-S-24R, PROVIDE W/ HALL MOUNT SINK FAUCET, EQUAL T18 BRASS B-0220	3'	2"	6"

GENERAL PLUMBING NOTES:

1. THE CONTRACTOR SHALL VERIFY THAT IT PROCEEDS WITH A PROGRAM OF INTERFERENCE WITH OTHER TRADES AND NORMAL FUNCTIONS OF EXISTING FACILITIES AND SERVICES.
2. VERIFY EXACT ROUGH-IN AND FINAL EQUIPMENT REQUIREMENTS IN FIELD.
3. THE CONTRACTOR SHALL BE RESPONSIBLE FOR ALL FINAL CONNECTIONS TO PLUMBING FIXTURES AND EQUIPMENT UNDO. THIS INCLUDES, BUT IS NOT LIMITED TO, FINISHING AND INSTALLING ALL TRAPS, DRAINS, AND SINKS WITH GUTS.
4. THE CONTRACTOR SHALL VERIFY THAT ALL PIPING, AS SHOWN ON THESE DRAWINGS, WILL NOT CONFLICT WITH ANY DRAINS, SINKS, VENTS, EQUIPMENT, ETC.
5. COORDINATE ROUTINGS AND LOCATIONS OF WASTE AND VENT PIPING WITH ALL OTHER TRADES.
6. THE PLUMBER CONTRACTOR SHALL COORDINATE WITH THE GENERAL CONTRACTOR AND OTHER TRADES, ALL REQUIRED OPENINGS AND EXCAVATIONS. ALL REQUIRED OPENINGS IN FOUNDATIONS, FLOORS, WALLS, AND ROOFS SHALL BE DESIGNED INTO THE STRUCTURE INITIALLY BY THE USE OF SLICES, CORDS, ETC. CUTS AND PATCHES SHALL BE HELD TO A MINIMUM.
7. ALL RISER PENETRATIONS THROUGH THE ROOF SHALL BE FLASHED A MINIMUM OF 12" ABOVE THE ROOF. ALL VENTS SHALL BE A MINIMUM OF 12" FROM ANY OUTSIDE AIR INTAKE. ALL VENTS SHALL BE OFFSET SO THAT ALL ROOF PENETRATIONS SHALL BE TO THE REAR OF THE BUILDING.
8. ALL UNDERGROUND WASTE PIPES SHALL BE 2" HDPE.
9. LOCATE ALL HORIZONTAL SEWER MAINS AWAY FROM LOAD BEARING STRUCTURAL MEMBERS.
10. ISOLATE WATER SUPPLY AND WASTE PIPING UNDER HANDICAPPED LAVATORIES WITH "HANG-LAY GUARD" JACKET.
11. CONTRACTOR SHALL FURNISH 1/2" "ARMAWOL" PIPE INSULATION FOR ALL METAL CONDENSATE DRAIN PIPES.
12. PROVIDE STOPS AND CHECK ABSORBERS AT EACH FIXTURE OR GROUP OF FIXTURES.
13. PROVIDE VACUUM BREAKERS AT FIXTURES WITH ROSE BREAD CONNECTIONS AND APPLIANCES WITH DIRECT CONNECTIONS TO DOMESTIC WATER.
14. PROVIDE DIELECTRIC UNIONS AT ALL DISCREET METAL PIPE CONNECTIONS.
15. ALL WATER LINES INSTALLED IN EXTERIOR WALLS OR ABOVE CEILING SHALL BE INSTALLED UNDO OF WALL INSULATION AND INSULATED INDIVIDUALLY TO PROTECT FROM FREEZING.
16. FLUSH HANDLES ON HANDICAP FIXTURES SHALL BE INSTALLED ON THE ROSE SIDE OF THE WALL.
17. A PRESSURE TEST OF PLUMBING SYSTEM SHALL BE PERFORMED PRIOR TO THE INSTALLATION OF DRAINAGE. THIS TEST IS TO BE PERFORMED UNDER THE SUPERVISION OF OWNER OR OWNER'S DESIGNER.
18. ALL VENTS TO BE TERMINATED IN ACCORDANCE WITH ALL APPLICABLE CODES.
19. PENETRATIONS THROUGH WALL AND FLOOR ASSEMBLIES SHALL BE PROTECTED BY UL RATED FIBERGLASS COMPATIBLE AND EQUAL IN RATING TO THE WALL OR FLOOR ASSEMBLY DURING PENETRATION.
20. ALL SEWER, VENT, AND WATER PIPING ROUTED IN CEILING SHALL BE COORDINATED WITH FLOOR FINISHES TO BE FINISHED TO AVOID PENETRATIONS THROUGH FINISH MEMBERS.
21. ALL WATER HEATER DRAIN PANS SHALL BE MIN. 6" DEEP. PROVIDE 1" INDIENT WASTE PIPE TO NEAREST FLOOR DRAIN OR ROUTE TO OUTSIDE OF BUILDING. TERMINATE EXTERIOR DRAINS WITH 10" ILL TURNED DOWN 6" TO 24" ABOVE FINISH GRADE. PROVIDE 1/2" VALVE RATED AT 100 PSIG AND 100% PPE TO PIP WITH COVER PIPE SIZED TO VALVE.
22. PLUMBING CONTRACTOR SHALL PROVIDE INDIRECT CONDENSATE DRAIN TO WITHIN 2 FT. OF COOLING COILS. CONNECT DRAIN TO HOUSE SIDE OF TRAP & FLOOR DRAIN OR SERVICE SINK WITH 2" HDPE AND BREAK. FINAL CONNECTION TO COOLING COIL BY MECH CONTRACTOR.



<p>Thomas E. Lovelace Mechanical Engineering 3339 155 NORTH, STE. 110B JACKSON, MISS. 39206-4141 PHONE AND FAX 601-743-8993 E-MAIL: TEL@CSTORSTORE.COM</p>	<p>PLUMBING DETAILS <i>Clingan and associates</i> architect</p>	<p>C-STORE Yandell Road Gluckstadt, Mississippi</p>
<p>DATE: 4/18/16 DRAWN: TEL CHECK: TEL</p>	<p>DATE: 4/18/16 DRAWN: TEL CHECK: TEL</p>	<p>DATE: 4/18/16 DRAWN: TEL CHECK: TEL</p>

7
of
14

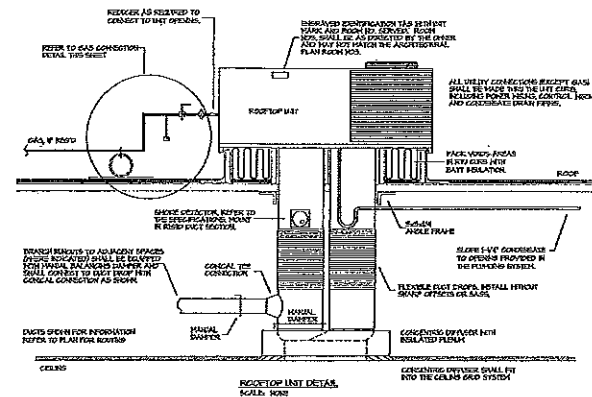
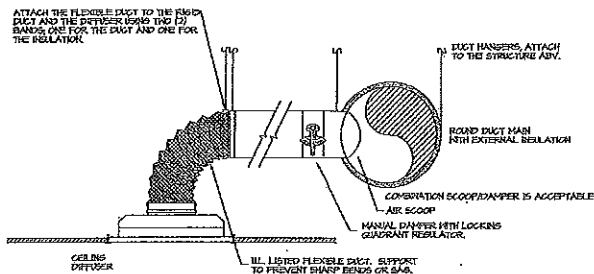
GAS-ELECTRIC PACKAGED UNIT SCHEDULE

MARK	ROOF COOLING CAP (TONS)	DESIGN BASIS	MODEL NO.	REFRIGERANT	ORIENTATION	AIRFLOW DATA			COOLING PERFORMANCE			HEATING		ELECTRICAL DATA				HEIGHT (ft)	
						SA CFM	CA CFM	ESP (ft H ₂ O)	TOTAL COOLING (BTU/H)	SENSIBLE COOLING (BTU/H)	SEER	EER	HEAT INPUT (BTU/H)	OUTPUT (BTU/H)	VOLTAGE	PHASE	PHOCP		FLA
RTH	5	CARRIER	20T2EAGS	R-410A	DOWNFLOW	2000	800	0.5	60,201	44,100	13		15,000	19,200	200-230V/160	3D	40	2D	264
RTH-2	5	CARRIER	20T2EAGC	R-410A	DOWNFLOW	2000	800	0.5	60,201	44,100	13		15,000	19,200	200-230V/160	3D	40	2D	264

ALL RATINGS @ 95°F AMBIENT AIR AND 55°F DB/57° RH MIXED AIR.
 PROVIDE ELECTRICAL PROGRAMMABLE THERMOSTATS MOUNTED @ 48" AFF.
 PROVIDE 2" X 6" T INSULATION.
 PROVIDE MANUAL OUTSIDE AIR DAMPER.

EXHAUST FAN SCHEDULE

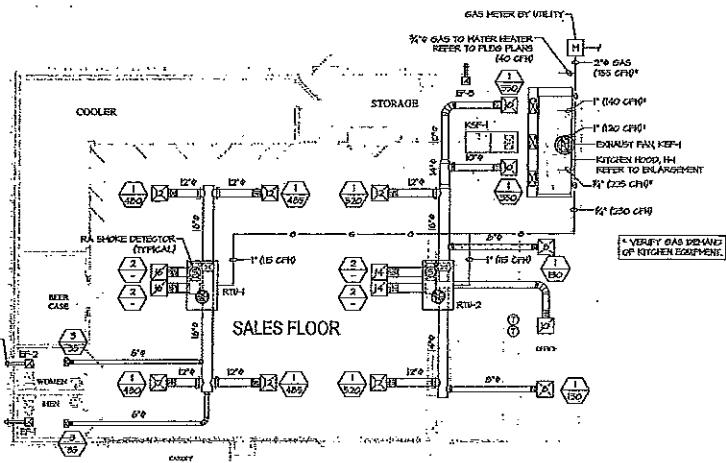
TAG NO.	FLOOR (CH)	STATIC	VOLTAGE	FLA	DESIGN BASIS	DUCT TO OUTDOORS
EF-1 THRU EF-3	5D	18" WG	157/200	0.4/0.5	EXHAUST	5"



DIFFUSER, REGISTER & GRILLE SCHEDULE

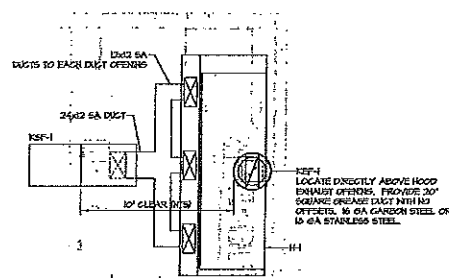
TYPE	SEWAGE	CFM RANGE	SIZE	NECK	RADIUS
TYP. 1	SUPPLY AIR SQUARE CEILING DIFFUSER (LAY IN CEILING)	0 - 100	24" x 24"	8"	8"
		105 - 200	24" x 24"	8"	8"
		205 - 360	24" x 24"	10"	10"
		365 - 600	24" x 24"	12"	12"
		605 - 900	24" x 24"	14"	14"
TYP. 2	RETURN AIR/ EXHAUST AIR CEILING GRILLE (LAY IN CEILING)	0 - 100	24" x 24"	8"	8"
		105 - 200	24" x 24"	8"	8"
		205 - 378	24" x 24"	10"	10"
		380 - 600	24" x 24"	12"	12"
		605 - 900	24" x 24"	14"	14"
TYP. 3	RETURN AIR/ EXHAUST AIR WALL REGISTER	0 - 100	8" x 8"	8"	8"
		105 - 250	8" x 8"	8"	8"
		255 - 450	12" x 8"	12"	8"
		455 - 600	12" x 10"	12"	10"
		605 - 900	12" x 12"	12"	12"
TYP. 4	RETURN EXHAUST WALL GRILLE	0 - 250	8" x 8"	8"	8"
		255 - 600	8" x 8"	8"	8"
		605 - 1200	12" x 8"	12"	8"
		1205 - 1800	12" x 10"	12"	10"
		1805 - 2400	12" x 12"	12"	12"
TYP. 5	ROUND SUPPLY DIFFUSER (GENERAL DUCT HANG)	0 - 100	8"	8"	8"
		105 - 250	10"	8"	8"
		255 - 350	12"	10"	10"
		355 - 600	14"	12"	12"
		605 - 900	16"	14"	14"
TYP. 6	RECTANGULAR SUPPLY DIFFUSER (GENERAL DUCT HANG)	0 - 50	8" x 6"	8"	6"
		55 - 250	8" x 6"	8"	6"
		255 - 350	12" x 6"	12"	6"
		355 - 450	12" x 8"	12"	8"
		455 - 600	12" x 10"	12"	10"

NOTES:
 1. REFER TO MECHANICAL FLOOR PLANS FOR LOCATIONS AND QUANTITIES.
 2. EXACT LOCATION OF ALL CEILING MOUNTED DIFFUSERS, REGISTERS, & GRILLES SHALL BE AS SHOWN ON THE ARCHITECTED CEILING PLANS.
 3. RADIUS GOES ARE AS NOTED IN SCHEDULE UNLESS OTHERWISE NOTED ON PLANS OR DETAILS.
 4. NOT ALL SIZES SHOWN MAY BE USED ON THIS PROJECT.
 5. DIFFUSER TYPE 'S' TYPICAL PATTERNS INDICATED ON PLANS.
 TYPICAL SUPPLY NECK/RINGOUT: [Symbol] DIFFUSER TYPE, SEE ABOVE
 TYPICAL RETURN NECK/RINGOUT: [Symbol] DIFFUSER TYPE, SEE ABOVE (USED WHEN CFM IS NOT SPECIFIC)



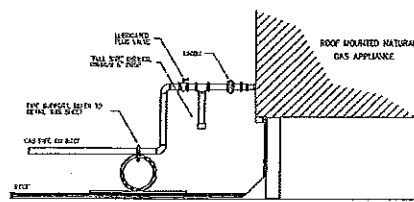
HVAC PLAN

SCALE 1/8" = 1'-0"



KITCHEN HOOD PLAN

SCALE 1/4" = 1'-0"



Natural Gas Connection Detail

SCALE: NONE

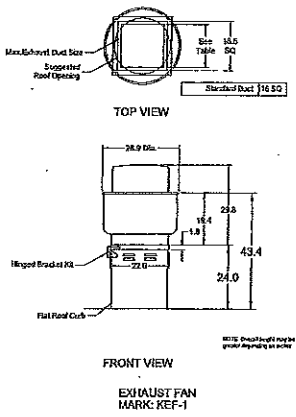
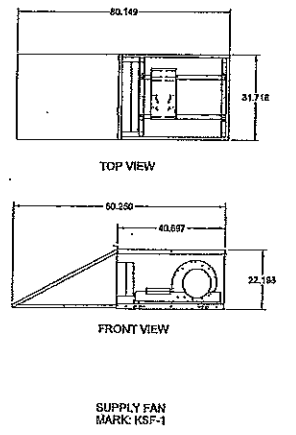
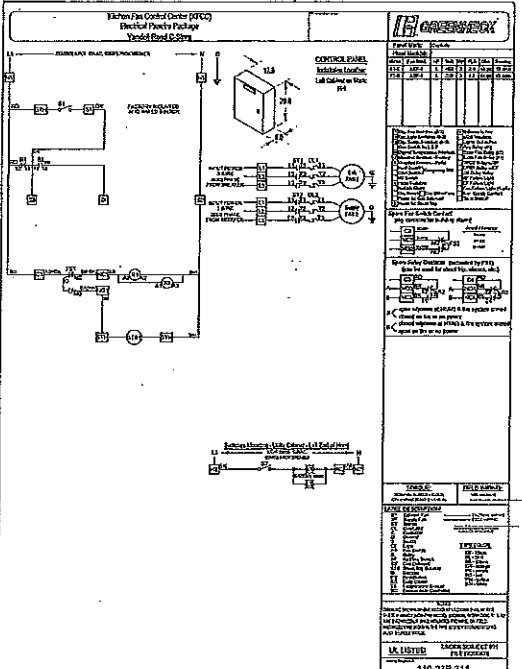
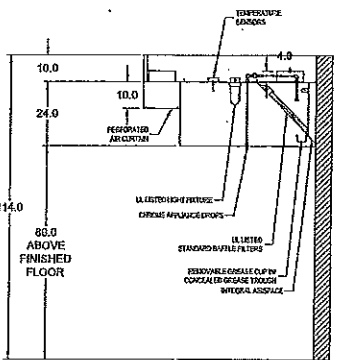
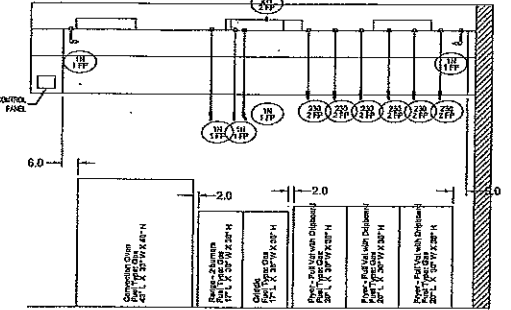
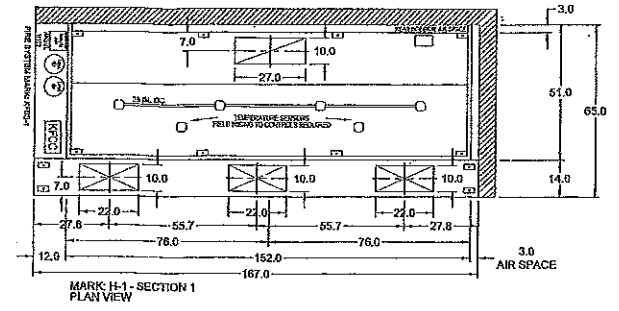
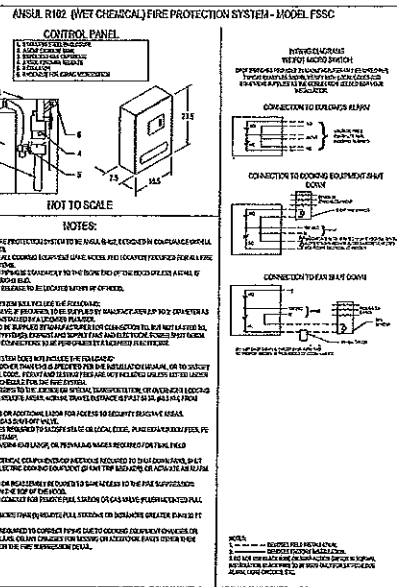
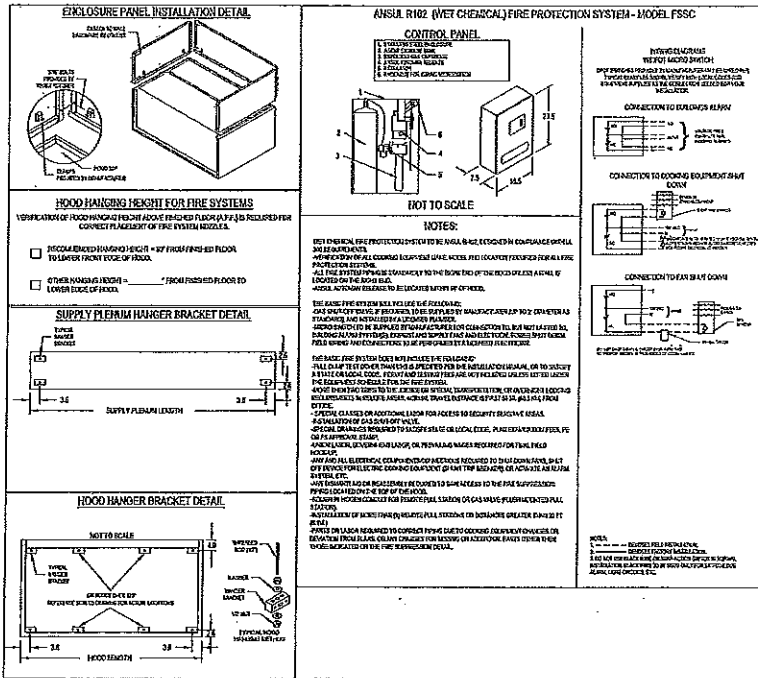
GENERAL NOTES

1. INSTALL EXHAUST FANS PER IFPE. RESTRICTIONS, DUCT TO OUTDOORS. TERMINATE IN WEATHER PROOF CAP. PROVIDE BACKFLOW DAMPERS AT EACH FAN. ELECTRICAL INSTALLER TO WIRE EACH FAN TO LIGHT SWITCH PER ELECTRICAL DRAWINGS.
2. EXHAUST DRAINERS SHOWN ARE INSIDE CLEAR DRAINERS.
3. CONTRACTOR TO PROVIDE NEH DISPOSABLE FILTERS AT COMPLETION OF CONSTRUCTION.
4. PRIOR TO INSTALLATION CONTRACTOR SHALL VERIFY LOCATIONS OF ANY OBSTRUCTIONS AND ADJUST DUCT LAYOUT AS REQUIRED.
5. PROVIDE BALANCING DAMPERS AT ALL BRANCH TAKE-OFFS. RUSTKIT IS REQUIRED FOR HANGS (ROUND).
6. ALL RISERS SHALL BE EQUIPPED WITH LOCAL DISCONNECTS.
7. GFI CONVENIENCE OUTLETS SHALL BE INSTALLED AT RTUS WHERE REQUIRED, REFER TO ELECTRICAL DRAWINGS.



Thomas E. Lovelace Professional Engineer 2443 South Drive P.O. Box 205 Phone: (601) 939-5591 e-mail: thlovel@earthlink.net	<p>HVAC PLAN</p> <p><i>clingan and associates</i> architect</p> <p>5339 I-55 NORTH, STE. 110B JACKSON, MISS. 39206-4141 PHONE AND FAX 601-713-0991 E-MAIL: cing@clinganandassociates.com</p>	<p>C-STORE</p> <p>Yandell Road Cluckstadt, Mississippi</p> <p>Rev. 4/19/16 Date Drawn Check</p>
	<p>ALL MATERIALS HEREON © 2016 CINGAN AND ASSOCIATES ARCHITECT</p>	<p>M-1</p>

8 OF 17



Thomas E. Lovelace Licensed Professional Engineer No. 24827 State of Mississippi	HOOD DETAILS 1 <i>clingan and associates</i> architect	C-STORE Yandell Road Cluckstad, Mississippi
	5339 I-55 NORTH, STE. 110B JACKSON, MISS. 39206-4141 PHONE AND FAX 601-713-0993 FAX 601-713-0993	Date: 4/28/16 Drawn: JAC Scale: 1/8" = 1'-0" Sheet: M-2

CONTROL INFORMATION

MARK	ELECTRICAL CONTROL PACKAGE		USER INTERFACE		FANS CONTROLLED				
	MODEL	LOCATION	TYPE	LOCATION	MARK	TYPE	VOLT	PHASE	HP
CONTROLS	KFC	CABINET - LEFT END OF H-1	SWITCHES	CABINET - LEFT END OF H-1	REF-1	EXHAUST	480	3	1
					KSF-1	SUPPLY	208	3	1

CONTROL FEATURES

CONTROL PANEL ENCLOSURE - 18 GA 300 SERIES STAINLESS STEEL ENCLOSURE (NEMA-1) - DIMENSIONS 12 X 20 X 6
 STARTERS PROVIDED IN CONTROL PANEL - QTY 2
 2 POSITION LIGHT SWITCH - QTY 1
 2 POSITION FAN SWITCH - QTY 1
 -FACTORY MOUNTED EXHAUST TEMPERATURE SENSORS - QTY 2
 TURN ON EXHAUST IN FIRE
 POWER FOR SHUNT TRIP
 THERMAL OVERLOADS IN CABINET

HOOD INFORMATION

HOOD NO.	MARK	GREENHECK MODEL NO.	HOOD DIMENSIONS (IN.)			HOOD CONSTR.	HOOD TEMP. RATING	TOTAL CFM	EXHAUST				SUPPLY		TOTAL WEIGHT LBS.	SECTION LOCATION
			LENGTH	WIDTH	HEIGHT				COLLAR(S)				MUA CFM	AC CFM		
1	H-1	GHEW-152-S	152	51	24	AS IS WHERE EXPOSED	600 DEG F	2850	WIDTH 10	LENGTH 27	DIAM. 2850	S.P. 0.409	2280		482.333	SINGLE

HOOD INFORMATION

HOOD NO.	MARK	LIGHTING DETAILS			GREASE FILTRATION DETAILS			UTILITY CABINET(S)					
		FIXTURE TYPE	BULB / LAMP INFO	QTY	FOOT CANDLES	TYPE / MODEL	MATERIAL	QTY	SIZE (IN.)	LOCATION	FIRE SYSTEM	CONTROLS	
1	H-1	INCANDESCENT (GLOBE)	100W A19 (BULBS NOT INCL)	4	43.42	BAFFLE	2	16	20	LEFT	ANSUL R102	REC	SWITCHES
						STAINLESS STEEL	6	6	20				

SUPPLY PLENUM INFORMATION

HOOD NO.	MARK	POS.	TYPE	SIZE (IN.)			INSULATED	DAMPER(S)	LED LIGHT(S)	TOTAL CFM	COLLARS							
				L	W	H					TYPE	MOUNTING	QTY	W	DIA	CFM	S.P.	VEL.
1	H-1	FRONT	ASP	167	14	10	NO	NO	NO	2280	MUA	FACTORY	3	10	22	760	0.12	487

HOOD OPTIONS

UL 710 LISTED W/ GUT EXHAUST FIRE DAMPER - UL #MH11726
 BACK INTEGRAL AIR SPACE - 3 IN WIDE
 RIGHT NON-INTEGRAL AIR SPACE - 3 IN WIDE
 10 IN HIGH CEILING ENCLOSURES - FRONT LEFT - FIELD INSTALLED
 FACTORY MOUNTED EXHAUST COLLAR(S)
 PERFORMANCE ENHANCING LIP (PEL) TECHNOLOGY
 STANDING SEAM CONSTRUCTION FOR SUPERIOR STRENGTH

FIRE SYSTEM INFORMATION

MARK	MODEL	LOCATION	FLOW POINTS		SUPPLY LINE	DETECTION	MARK(S) PROTECTED BY FIRE SYSTEM
			HOODS	PCU			
KFS-1	ANSUL B-102 WET CHEMICAL	19 UTILIZED	22 AVAILABLE	CONTINUOUS	FUSIBLE LINK	H-1 SECTION 1

FIRE SYSTEM OPTIONS AND ACCESSORIES

FULL INSTALLATION (INCLUDES PRE-PIPED HOOD(S) WITH DETECTION AND FACTORY COORDINATED INSTALL)
 CHROME SLEEVES FOR FACTORY PROVIDED APPLIANCES DROPS - INCLUDED
 METAL BLOW-OFF CAPS - INCLUDED
 GAS VALVE - INCLUDED - MECHANICAL SHUTOFF VALVE, 2 IN. (ANSUL) - PART# 65810
 HOOD SUPPRESSION AGENT - INCLUDED - 6 GAL. - (2) 3.0 TANK(S)
 REMOTE PULL STATION - STANDARD - INSTALLATION AT SINGLE POINT OF EGRESS

EQUIPMENT SCHEDULE

Blow Down Upblast Centrifugal Roof Exhaust Fan MARK: KSF-1

Qty	Greenheck Model	Volume (CFM)	ESP (Inches WG)	FRPM	Thrust (lb)	Weight (lb)	Size (In)	VCP	Code	Windings	PLA
1	CUS-161-10	2850	0.75	1200	0.82	115	1	450/50/3	OP	1725	1 2.1

OPTIONS AND ACCESSORIES

Standard GCB cap 60" - 22 in. square
 ULACA 700 Listed - "Energy Modifiers for Roof Exh. Applications"
 Smooth INSUL-11, Zingite, Blended with UHMW
 Roof Collar G-14, GFV-20-42A, Under Steel 1 in. Total
 Height Standard Kit (P/N 877551) (Shipped Loose)
 Grease Trap (P/N 47550)
 Heat Baffle (N/A)

EQUIPMENT SCHEDULE

Non-Tempered Make-Up Air Unit MARK: KSF-1

Qty	Greenheck Model	Volume	External SP	Total SP	FRPM	Operating Power	Weight
1	KSF-11N-H11-01	2280 CFM	0.5 in. wg	0.700 in. wg	827	0.74 hp	207 lb

Size	VCP	Enclosure	Make RPM	Windings	MCA	MOP
1 hp	200/003	COF	1725	1	5.8	10

Options and Accessories

Outlet Speed Power By Drive Shaft

Q25	Q26	Q27	Q28	Q29	Q30	Q31	Q32	Q33	Q34	Q35	Q36	Q37	Q38	Q39	Q40	Q41	Q42	Q43	Q44
125	125	125	125	125	125	125	125	125	125	125	125	125	125	125	125	125	125	125	125

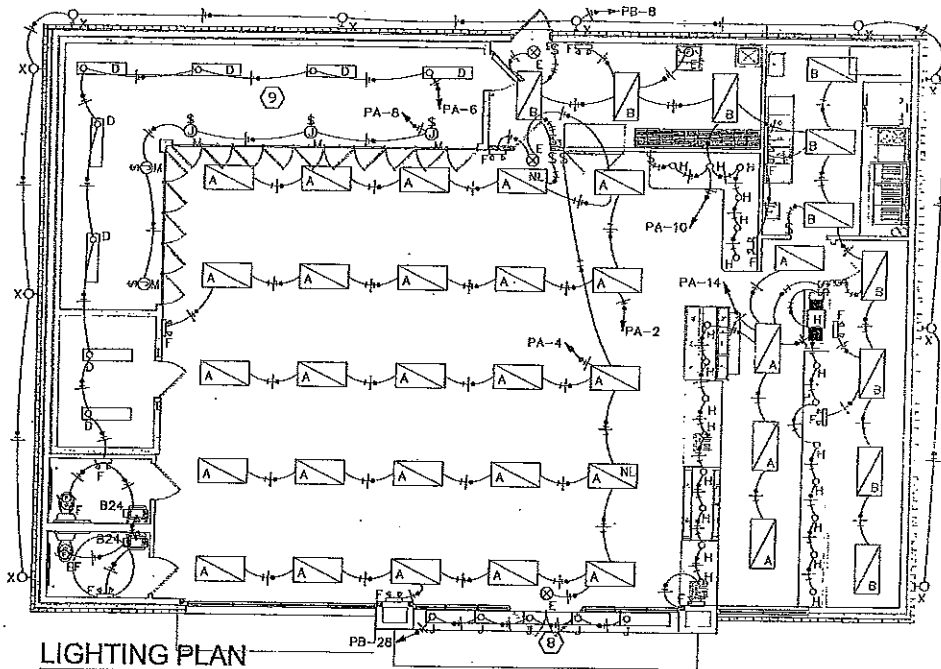
Options and Accessories

Air Flow Arrangement: Outside Air Only
 Weather Hood: Aluminum Mesh, No. 20x1 - (0)
 Discharge: 18"
 Discharge Position: End
 Discharge Position: Bottom
 Discharge: Galvanized
 Insulation: None
 Access: 60" High Hand
 Mounting: GPN24, 3/8" x 3/16"
 Collar: Insulate 1 in. Inside
 UCA Warranty: 1 Yr. (Standard)



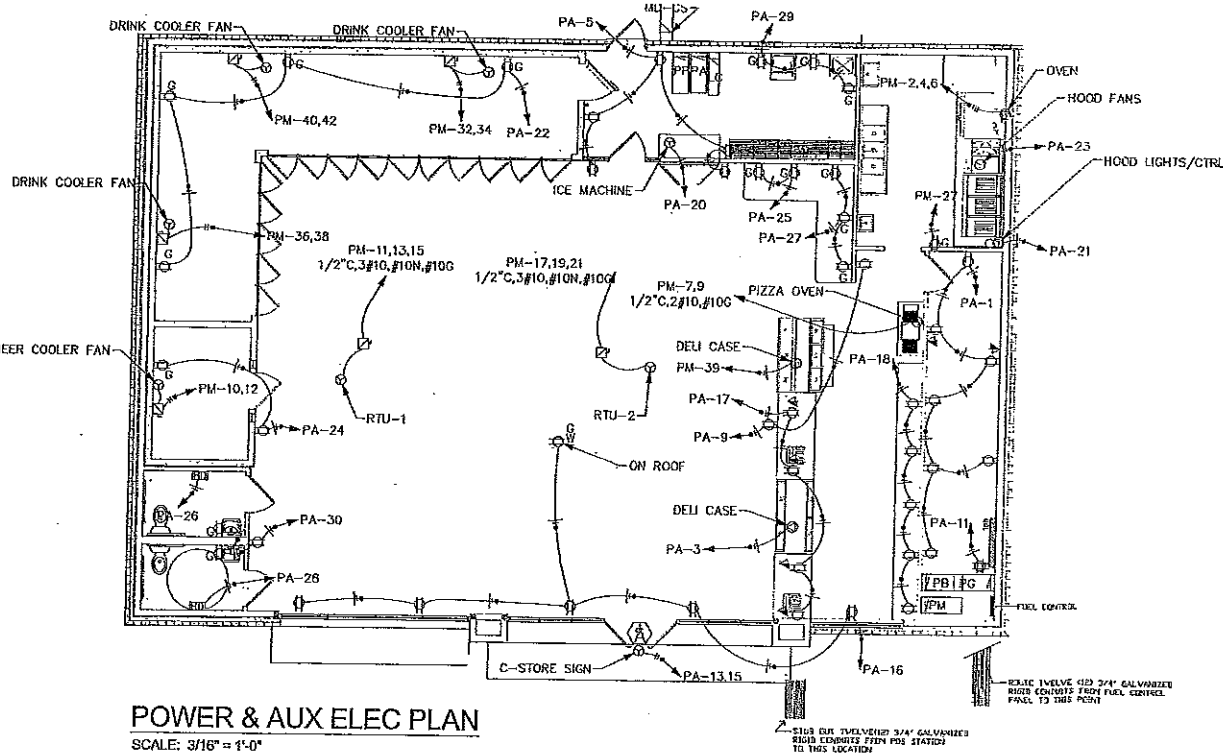
Thomas E. Lovelace Licensed Professional Engineer Mechanical Engineering 5339 J-S North Ste. 110B Jackson, Miss. 39206-4141 Phone: 601-923-3901 Email: tlovel@clingan.com	HOOD DETAILS 2 clingan and associates architect	C-STORE Yandell Road Guckstadt, Mississippi Date: 4/18/16 Rev: _____ Drawn: TEL Scale: _____ Sheet: M-3
---	--	---

10 of 17



LIGHTING PLAN
SCALE: 3/16" = 1'-0"

CALLOUT	SYMBOL	LAMP	DESCRIPTION	BALLAST	MOUNTING	MODEL	INPUT WATTS	VOLTS
A	[Symbol]	(3) 32W F32T8/741	2 X 4, 3 LAMP TROUFER	ELECTRONIC	RECESSED	LITHONIA 2018 332 AT120 GER	110	120V 1P 2W
B	[Symbol]	(2) 32W F32T8/741	2 X 4, 2 LAMP TROUFER	ELECTRONIC	RECESSED	LITHONIA 2018 332 AT120 GER	74	120V 1P 2W
B24	[Symbol]	(1) 17.5W LED	24" WALL MOUNT LED, 2000K COLOR, INTEGRAL PR SILICON, BORE TO YIELD WHEN ROOM UNOCCUPIED, FAULTH WITHOUT LUMEN MANAGEMENT	ELECTRONIC	WALL	LITHONIA W2 18L LED10 W217 H100 D0410	17.5	120V 1P 2W
D	[Symbol]	(2) 32W F32T8/741	SHARP LOCATION FLOURESCENT	ELECTRONIC	SURFACE	LITHONIA DL1 232 A004 120 GER	74	120V 1P 2W
E	[Symbol]	(1) 4W LED	LED THERMO-ASTRO EXT LAMP WITH BATTERY.	ELECTRONIC	CEILING	LITHONIA LDM30R 120/E77 E.L. N	12	120V 1P 2W
F	[Symbol]	(2) 5.4W LED	DOOR HEAD EMERGENCY LIGHTS, WHITE, LUTRON FROM PHOTO-ELECTRIC, LED, 1A, LISTED BAMP LOCATION, 50"-10"1/2", 253"-BAGROUSTICS, LOW-VOLTAGE VOLTAGE 120-277V 50 OR 60HZ, 1" PARM EGRESS AT 36" T.S. CEILING, 66" 10" CEILING, 50" 10" CEILING.	ELECTRONIC	WALL	LITHONIA LED1 W LP00V5 LTP 50	18.2	120V 1P 2W
H	[Symbol]	(2) 25W 350TT	6" RECESSED CAN LIGHT, WHITE SPLAY, TEMPERED T3 FLAT FROSTIC LENS	ELECTRONIC	CEILING	LITHONIA LFB 120 2/2001T 164773 420 GER	60	120V 1P 2W
J	[Symbol]	(1) 32W 32T8	LOW PROFILE SHRP LIGHT TB	ELECTRONIC	WALL	LITHONIA Z1 32 120 CE1000S T8V	32	120V 1P 2W
M	[Symbol]	(1)		ELECTRONIC	CEILING	AMERICAN BOX FOR REGR LIGHTS WITH WALL SWITCH	250	120V 1P 2W
P	[Symbol]	(1) 400W	LIGHTS SUPPLIED WITH GAS CANOPY	ELECTRONIC	CEILING	SEE GAS CANOPY	435	208V 2P 2W
PI	[Symbol]	(1) 277W LED	0532 LED W/4 (20) LED LIGHT ENGINES, (2) 1050MA FERRITES, AMPC LED, TYPE T40 OPTICS WITH HOUSE SIZE SHIELD, NIGHTTIME FRIENDLY, EPA 1.1.	ELECTRONIC	POLE	LITHONIA D633 LED B2C 1000 50K AMPC T40 HX047 415 SFA	277	120V 1P 2W
X	[Symbol]	(1) 100W 100W 401 50-17	DECORATIVE WALL MOUNTED FORWARD THROWN METAL HALIDE WITH 10X UP LIGHTING.	ELECTRONIC	CEILING	LITHONIA WSR 100M FTU 120 SCWA	140	120V 1P 2W



POWER & AUX ELEC PLAN
SCALE: 3/16" = 1'-0"

CALLOUT	SYMBOL	REMARK	VOLTS	FEATURES
CEI	[Symbol]	S-15R	120V 1P 2P	0, GND
Hand Dryer	[Symbol]		120V 1P 2W	GND
QUAD	[Symbol]	S-15R	120V 1P 2W	GND
STANDARD	[Symbol]	S-15R	120V 1P 2W	GND
WEATHERPROOF	[Symbol]		120V 1P 2W	W, G, GND

CALLOUT	SYMBOL	NOTE 1	NOTE 2	NOTE 3
Telephone / Computer Outlet	[Symbol]	TELEPHONE OUTLET AND COMPUTER RAYS CAT5 JACK, 4" x 4" x 2" FLUSH MOUNTED OUTLET BOX.	WITH 1/2" CONDUIT STRIPPED-UP ABOVE THE ACCESSIBLE CEILING.	MINIMUM OUTLET BOX 18" AFF. PROVIDED WITH PULLBOX IN CONDUIT.
TUB	[Symbol]	4" x 4" x 3/4" PLYWOOD PAINTED TWO COATS BLUE ENAMEL.	PROVIDE ONE #6(6) 1/2" CONDUIT CONNECTED TO THE BUILDING SERVICE GROUND.	ROUTE ONE 3" CONDUIT FROM BACKWARD TO PROPERTY USE AS DIRECTED BY LOCAL TELEPHONE SERVICE ENTRANCE. VERTICAL PULL STRING/WIRE IN CONDUIT.

DEVICE	FEEDER		BRANCH CIRCUIT		TOTAL VOLTAGE DROP
	VOLTAGE DROP	WIRE SIZE	MAX VOLTAGE DROP	WIRE SIZE	
UTIL TRANS	0%	#6	-	-	0%
40-CE	0.55%	(2) #1000cm12	-	-	0.55%
PP	0.55%	(2) #1000cm12	-	-	0.55%
LC	0.68%	#500cm12	14'	-	0.68%
PB	0.87%	#550cm12	21'	2.13% (CMT 8)	#12 3%
PA	0.71%	#14/0	12'	2.48% (CMT 3)	#12 3.19%
PG	0.65%	#14/0	59'	2.48% (CMT 12)	#12 3.34%
PM	1.45%	#750cm12	77'	1.85% (CMT 11.5)	#10 3.3%

systems engineering
automation power electrical
142 Woodberry Place, Madison, MS 39110
601-214-5513 LannyPuvlisPE@SystemsEngr.com

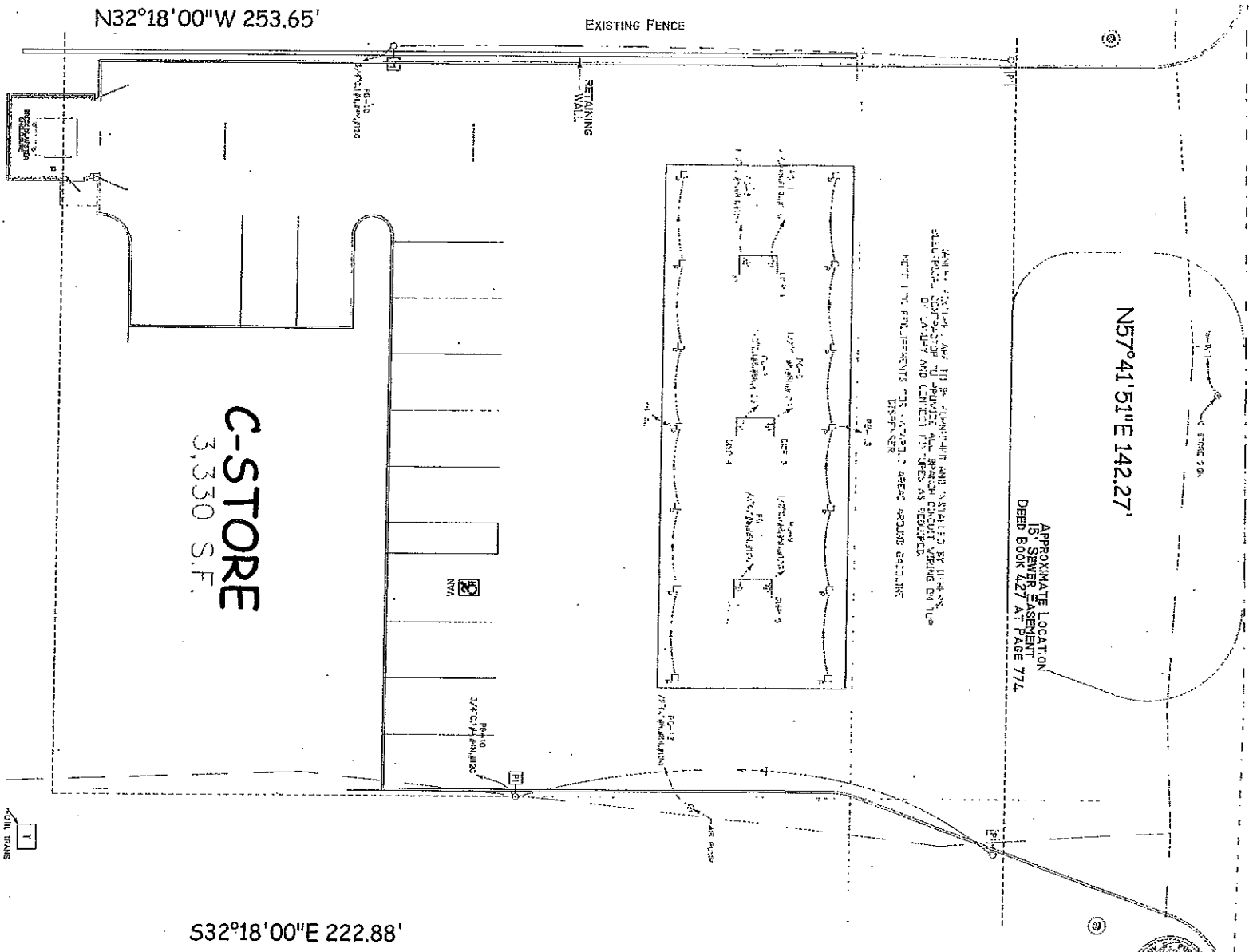
ELECTRICAL NOTES
olingan and associates
3319 I-55 NORTH, STE. 1109
JACKSON, MISS. 39206-4141
601-715-9993
E-MAIL: c.olingan@olinganassociates.com

C-STORE
Yandell Road
Cluckstad, Mississippi
C.O. 820.15 P/L
Date LEP
R/c



12
14

F2



C-STORE
3,330 S.F.

N32°18'00"W 253.65'

EXISTING FENCE

RETAINING WALL

N57°41'51"E 142.27'

APPROXIMATE LOCATION
OF SEWER EASEMENT
DEED BOOK 12 / AT PAGE 774

NOTE: EXISTING AND NEW ELECTRICAL SYMBOLS AND NOTATIONS ARE INSTALLED BY THE ENGINEER. THE CONTRACTOR SHALL VERIFY ALL SYMBOLS AND NOTATIONS ON THE DRAWING AND CORRECT ANY ERRORS AS REQUIRED. THE CONTRACTOR SHALL BE RESPONSIBLE FOR OBTAINING ALL NECESSARY PERMITS AND APPROVALS FROM THE LOCAL AUTHORITIES.

S32°18'00"E 222.88'

SITE ELEC PLAN

SCALE: 1/8" = 1'-0"



systems engineering
automation power electrical

142 Woodberry Place, Madison, MS 39110
601-214-5513 LannyPurvisPE@SystemsEngr.com

ELECTRICAL NOTES

ching and associates

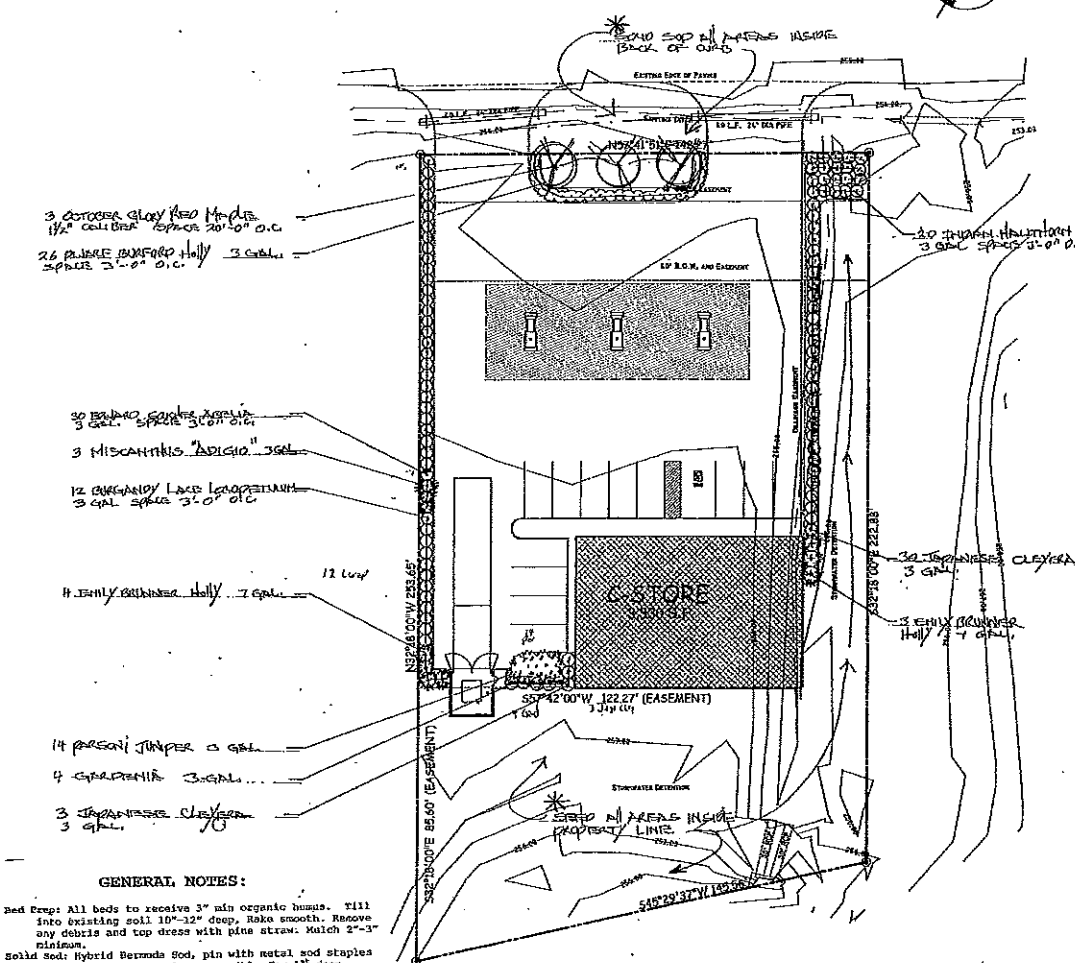
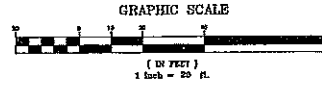
1330 S. NORTH, STE. 110B
JACKSON, MISS. 39206-4141
PHONE AND FAX 601-713-0993
E-MAIL: chingassociates@live.com

C-STORE

Yard Rd
Gloster, Mississippi

DATE	DESCRIPTION
02/28/15	REV
03/02/15	REV

E3



3 OCTOBER GLOVE RED HOLLIES
1 1/2" CALIBER SPACED 20'-0" O.C.

26 PALMER BURFORD HOLLY
SPACED 3'-0" O.C.

30 BOWEN QUAKER ASPEN
3" CAL. SPACED 3'-0" O.C.

3 MISCANTHUS ADIGIO 1" 3GAL.

12 BURGUNDY LAKE LEUCOPHYLLUM
3" CAL. SPACED 3'-0" O.C.

4 EMILY BRUNNER HOLLY 7" 4GAL.

14 PERSIAN JUMPER 0 GAL.

4 SPARTANIA 3.0GAL.

3 SPANISH CLEYERA
3 GAL.

GENERAL NOTES:

Bed Prep: All beds to receive 3" min organic humus. Till into existing soil 10"-12" deep, rake smooth. Remove any debris and top dress with pine straw. Mulch 2"-3" minimum.

Soil Sod: Hybrid Bermuda Sod, pin with metal sod staples on slopes. Contractor is responsible for 1" deep initial watering.

Seeded Areas: Disk +/- 4", drag smooth, Apply Bermuda seed at rate of 2 lbs/1000 s.f., 13-13-13 Fertilizer (1) 50 lb. bag/5000 s.f., 1 bale Wheat Straw/500 s.f.

Staking: Metal stakes 6' long to be used to stake trees. For 1 1/2" trees, use 2 stakes per tree. Crepe myrtle 1 per tree @ angle.

Warranty: All plants to be warranted for 6 months after final acceptance. Seeding areas will be accepted after all areas have been covered uniformly. No open exposed areas bigger than 6' across will be accepted. Watering: This is essential to be done on a regular schedule, failure to do so will relieve landscape contractor of warranty replacements of plants, sod and seeding.

LANDSCAPE PLAN
SCALE 1" = 20'-0"

LANDSCAPE PLAN		C-STORE								
clingan and associates architect		Yandell Road Gluckstadt, Mississippi								
5339 N.55 NORTH, STE. 1108 JACKSON, MISS. 39206-4141 PHONE AND FAX 601-733-0293		<table border="1"> <tr> <td>DATE</td> <td>REV.</td> <td>TITLE</td> <td>1E</td> </tr> <tr> <td> </td> <td> </td> <td> </td> <td> </td> </tr> </table>	DATE	REV.	TITLE	1E				
DATE	REV.	TITLE	1E							